

AKKORDLEHRE GANZ KONKRET

LEKTION #28

LÖSUNGEN

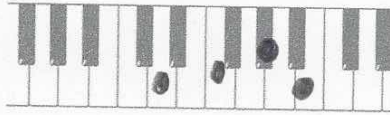
Aufgabe: Verminderte Akkorde bilden und notieren

Schreibe die folgenden Akkorde im Tastenbild und Notenbild!

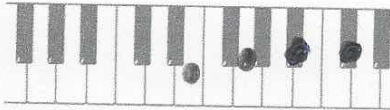
AUFGABE

32

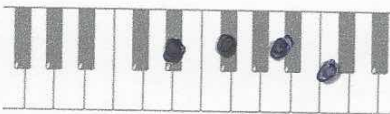
Ddim →



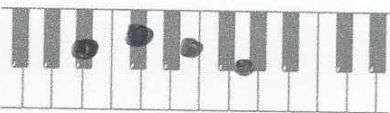
Edim →



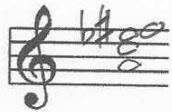
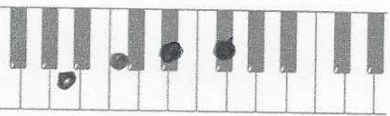
D#dim →



Bbdim →



Adim →

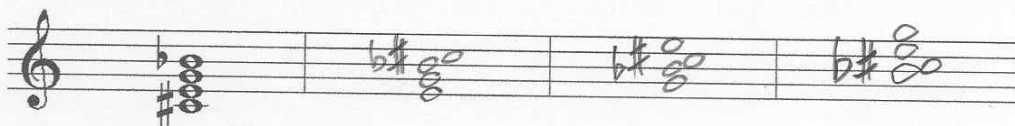


Aufgabe: Umkehrungen bilden

Spiele die gezeigten Akkorde auf den Tasten. Kehre sie um - jedesmal erhältst du neue, identische dim-Akkorde. Benenne sie mit Akkordsymbol!

AUFGABE

33

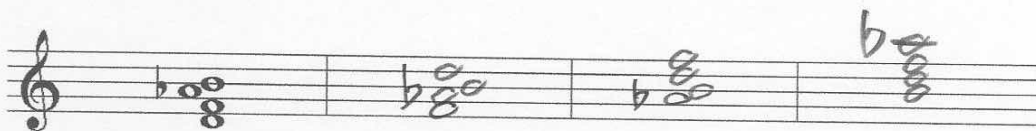


C#dim

Edim

Gdim

Bbdim



Ddim

Fdim

Abdim

Hdim

Aufgabe: GT-HT-Skalen selbst finden

1. Finde die GT-HT-Skala über dem Ton cis!

The exercise shows a treble clef staff with a key signature of one sharp (F#) and a chord symbol **C#dim** below it. To the right, a scale is written on a staff with a treble clef, starting on C# and ending on C#. The scale notes are C#, D, E, F#, G, A, B, C#. The notes are connected by a slur, and there are small upward-pointing triangles above each note. Below the staff is a horizontal line with four vertical tick marks, indicating a four-measure structure.

AUFGABE

34

2. Finde die GT-HT-Skala über dem Ton d!

The exercise shows a treble clef staff with a key signature of one flat (Bb) and a chord symbol **Ddim** below it. To the right, a scale is written on a staff with a treble clef, starting on D and ending on D. The scale notes are D, E, F, G, A, Bb, C, D. The notes are connected by a slur, and there are small upward-pointing triangles above each note. Below the staff is a horizontal line with four vertical tick marks, indicating a four-measure structure.

AUFGABE

35